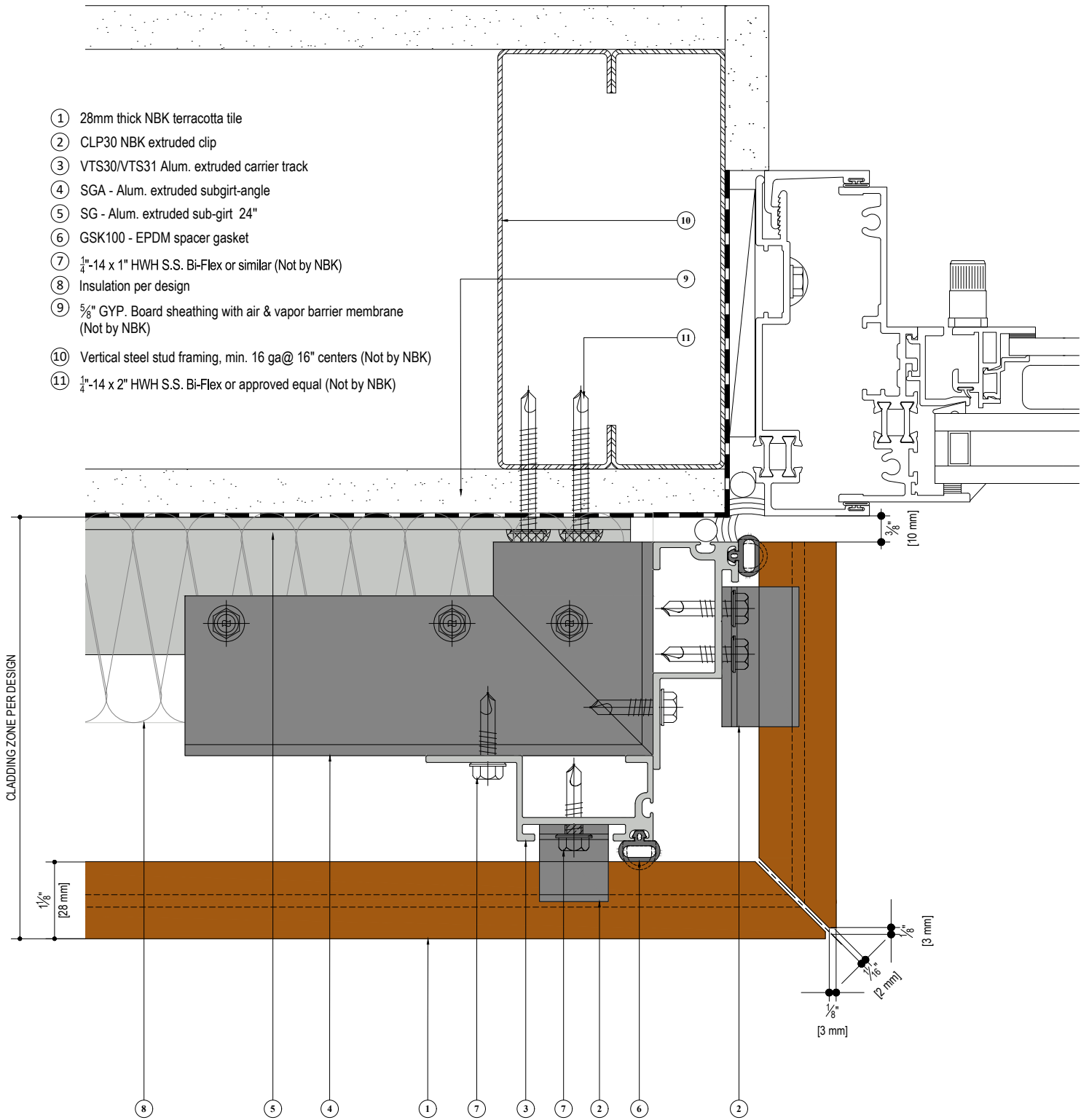


- ① 28mm thick NBK terracotta tile
- ② CLP30 NBK extruded clip
- ③ VTS30/VTS31 Alum. extruded carrier track
- ④ SGA - Alum. extruded subgirt-angle
- ⑤ SG - Alum. extruded sub-girt 24"
- ⑥ GSK100 - EPDM spacer gasket
- ⑦ ¼"-14 x 1" HWH S.S. Bi-Flex or similar (Not by NBK)
- ⑧ Insulation per design
- ⑨ ⅝" GYP. Board sheathing with air & vapor barrier membrane (Not by NBK)
- ⑩ Vertical steel stud framing, min. 16 ga@ 16" centers (Not by NBK)
- ⑪ ¼"-14 x 2" HWH S.S. Bi-Flex or approved equal (Not by NBK)



SYSTEM: TERRART 28

TILE DIRECTION: HORIZONTAL

DETAIL: STANDARD STUDWALL DETAIL

DRAWING REFERENCE: JAMB TILE

DETAIL NUMBER: NBK-HS-28-08

SCALE: 1:2

NBK | ARCHITECTURAL TERRACOTTA
 A Hunter Douglas Company

NBK North America
 10 Federal Street, Second Floor
 Salem, MA 01970
 Telephone: +1 (781) 639 2662
 www.nbkterracotta.com